



**10**

**Foams and accessories**

▪ B3 General purpose foam	3
▪ B2 foam	4
▪ FireStop Foam	5
▪ PU 1 B3 fast cure foam	6
▪ PU foam cleaner	7
▪ Foam & sealant accessories	8
▪ FiAM intumescent acoustic mastic	9
▪ FFRS fire rated silicone sealant	12
▪ DMS silicone sealant	14

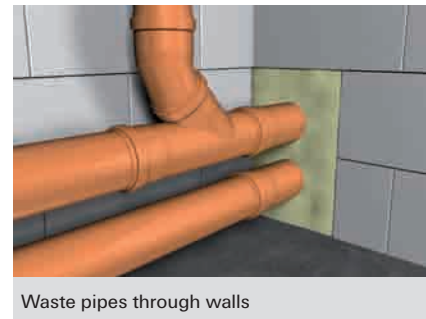




## Single component foam



Window connection joints



Waste pipes through walls

### ADVANTAGES

- Easy to apply.
- Strong cell structure for durability.
- Professional application with use of gun, optional.
- Foam yield (free foaming) up to 35 litres per 1000ml
- CFC-free propellant.
- Resistant to rotting and ageing.

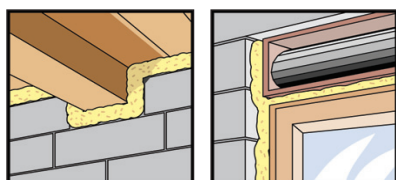
### APPLICATIONS

- Suitable for all general construction applications.
- Perfect for all types of filling and sealing tasks. From filling cavities gaps and around pipes to sealing between walls and ceilings etc.
- External applications must be protected from exposure to sunlight.
- It can be painted over or a sealant can be applied for UV protection.

### FUNCTIONING

- B3 foam is for general applications only.
- This is NOT a fire retardant foam.
- Resistance of hardened foam to temperatures of -40°C to +90°C.
- Shake cartridge before use, if using a foam gun apply the gun to the cartridge.
- Hold the tin upside down when extruding the foam.
- Working temperature +5°C to +35°C
- Tack-free after approx. 20-25 minutes, hardened/can be cut after approx. 1½ hours, for a 30mm bead. (all details based on temperature of +20°C / 65% R.H.).
- Fresh foam can be removed immediately with fischer PU cleaner.
- Note: foam is particularly difficult to remove once hardened

### INSTALLATION EXAMPLES



### TECHNICAL DATA

Item	Art.-No.	contents per canister [ml]	max. foam yield per 1000ml	Sales unit [pcs]
<b>B3 Hand Foam</b>	<b>42748</b>	750	35	12
<b>B3 Gun Foam</b>	<b>42749</b>	750	35	12
<b>Hand Nozzle x 10</b>	<b>42751</b>		-	

## Single component foam with fire retardant additives. Used as a backing foam with a suitable fire sealant



### BUILDING MATERIALS

Bonds to all standard building materials such as:

- Concrete
- Masonry
- Plastics (not on PE, PP, Teflon, silicone)

### CERTIFICATES

- Fire Class B2 to DIN 4102-Part 1

### ADVANTAGES

- Suitable for use as a backing material for fischer FiAM and FFRS as part of an assessed fire barrier system.
- Professional installation when used with a dispenser gun saves time.
- Fast curing.
- Good acoustic properties
- Provides enhanced thermal insulation.
- Can be used with a wide range of building materials.

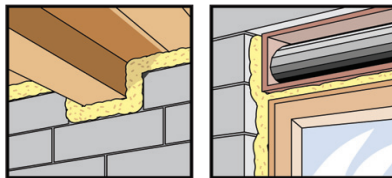
### APPLICATIONS

- Linear joints within walls in conjunction with fischer FiAM or FFRS - see pages 9/12 respectively.
- General gap filling within various building substrates
- Sealing around services in non-fire rated walls and floors.
- Perimeter joints in building envelopes
- Acoustic damping.

### FUNCTIONING

- B2 foam contains fire retardant additives. **To form a fire seal and obtain a fire rating approval the foam MUST be used in conjunction with fischer fire-rated intumescent acoustic mastic FiAM or fischer silicone sealant FFRS to produce a fire barrier.**
- Shake cartridge before use, if using a foam gun apply the gun to the cartridge.
- Hold the tin upside down when extruding the foam.
- Working temperature +5°C to +35°C
- Foam yield (free foaming) up to 40 litres per 1000ml.
- Resistance of hardened foam to temperatures of -40° C to +90° C.
- Tack-free after approx. 20-25 minutes, load-bearing after approx. 1½ hours, for a 30mm bead. (All details based on temperature of +20°C / 65% R.H.).
- Fresh foam can be removed immediately with fischer PU cleaner.
- Note: foam is particularly difficult to remove once hardened.

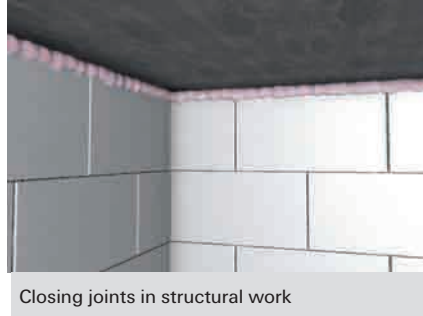
### INSTALLATION EXAMPLES



### TECHNICAL DATA

Item	Art.-No.	contents per canister [ml]	max. foam yield Per 1000ml	Sales unit [pcs]
B2 Hand Foam	42755	750	40	12
B2 Gun Foam	42754	750	40	12
Hand Nozzle x 10	42751		-	

## The single component filler foam with fire retardant additives and proven fire resistance



Closing joints in structural work

### BUILDING MATERIALS

Bonds to all standard building materials such as:

- Concrete
- Masonry
- Plastics (not on PE, PP, Teflon, silicone)

### CERTIFICATES

- Tested to BS 476:Part 20 (linear gap sealing).
- BS EN 1366-4:2006
- Warrington Fire Research Report 13492C
- B1 fire classification DIN 4102 part 1
- EN1366 part 4 to BS476 part 20

### ADVANTAGES

- Fast cure, high yield polyurethane foam.
- Provides up to 4 hrs fire resistance.
- Seals joints up to 30mm wide without the need to use of other expensive products.
- Can be used with fischer FiAM and FFRS sealants to extend application range
- No post shrinkage or expansion once cured.
- Fast Installation with use of gun, optional.

### APPLICATIONS

- Suitable for horizontal linear joints in fire rated walls
- Concrete/masonry to steel joints in conjunction with FiAM and FFRS sealants
- Gaps around timber door frames, when used with fischer FiAM
- Please refer to the Warrington Fire Research Report for further details, for a copy please contact the fischer Technical Services Team.

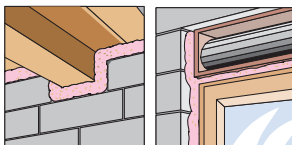
### FUNCTIONING

- Shake cartridge before use, if using a foam gun apply the gun to the cartridge.
- Hold the tin upside down when extruding the foam.
- Foam yield (free foaming) up to 40 litres per 1000ml.
- Resistance of hardened foam to temperatures of -40° C to +90° C.
- Tack-free after approx. 25 minutes, load-bearing after approx. 2 hours, for a 30mm bead.
- Fresh foam can be removed immediately with fischer PU cleaner.
- Note: foam is particularly difficult to remove once hardened

### FIRE RATING

Wall depth [mm]	Gap width [mm]	Sealant depth [mm]	Backing [mm]	Integrity [mm]	Insulation [mm]
100	31	100	None	50	50
100	11	100	None	103	104
200	11	200	None	229	229
200	41	200	None	110	110
200	30	200	None	162	158
200	10	200	None	240	240

### INSTALLATION



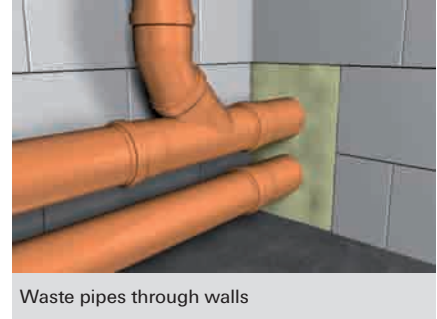
### TECHNICAL DATA

Item	Art.-No.	contents per canister [ml]	max. foam yield Per 1000ml	Sales unit [pcs]
FireStop Hand Foam	42757	750	40	12
FireStop Gun Foam	43712	750	40	12
Hand Nozzle x 10	42751		-	

## The B3 fast cure, reusable foam designed for hand use only



Window connection joints



Waste pipes through walls

### BUILDING MATERIALS

Bonds to all standard building materials such as:

- Concrete
- Gypsum plasterboard
- Wood
- Sand-lime brick
- Plastics (not on PE, PP, Teflon, silicone)
- Masonry
- Metals with priming coat
- Plaster

### CERTIFICATES

- General test certificate from building authorities P-NDS04-136 for B2
- Proven joint soundproofing for B2: R (ST,w)=61 dB in line with ISO EN 717-1 for B2

### ADVANTAGES

- Designed for hand use only, no additional tools required.
- Specially designed handle shaped to aid comfort and ease of use
- Rapid hardening speeds up installation time.
- Resealable valve system, foam can be reused after initial opening.
- Safety seal to prevent accidental foam release.
- Resistant to rotting and animal faeces.
- Protective gloves stored in base of can.

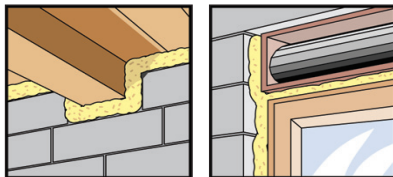
### APPLICATIONS

- Rapid installation foam B3 is suitable for all types of filling and sealing tasks from filling cavities, gaps and voids to areas around pipes etc.

### FUNCTIONING

- 1-component polyurethane foam.
- Building material class B3.
- Valve design prevents foam adhesion when being stored horizontally.
- Foam yield (free foaming) up to 41 litres per 750ml / 28 litres per 500 ml.
- Processing temperature +5°C to +35°C.
- Non-tacky after approx. 20 minutes. Can be cut after approx. 40 minutes. Cures within 5 to 8 hours.
- Temperature resistant from -40°C to +90°C
- Layer thicknesses > 50 mm: foam in several layers and then dampen.
- Fresh foam stains can be removed immediately with fischer PU cleaner.
- Note: foam is particularly difficult to remove once hardened

### INSTALLATION EXAMPLES



### TECHNICAL DATA

Item	Art.-No.	contents per canister [ml]	max. foam yield Per 1000ml	Sales unit [pcs]
PU1/500 B3	58500	500	28	12
PU1/750 B3	50427	750	41	12

## PU foam cleaner



### ADVANTAGES

- The active ingredients produce an effective cleaning solution making it ideal for the safe removal of uncured PU foam.
- The tin can be attached to all standard foam guns for internal cleaning & flushing of recently used foam.
- The tin comes complete with a hand operated spray nozzle for cleaning foam splashes outside of the gun and other external surfaces.
- The cleaner can damage sensitive surfaces (paint, dye, textiles, plastics). Please ensure you carry out a preliminary test prior to use.

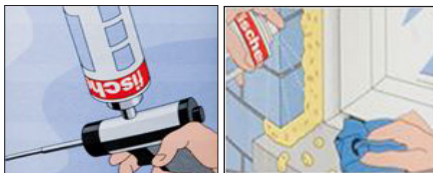
### APPLICATIONS

- For cleaning uncured foam splashes from the body of foam guns and other external surfaces.
- To remove uncured foam from within the gun.
- Clean any uncured foam from the valve mechanism on the top of the can, so that canister can be reused

### FUNCTIONING

- For removal of uncured foam.
- **It is advisable to clean foam guns thoroughly after each use.**
- To help prolong a longer life of the foam guns it is advisable to remove uncured foam from within the gun mechanism/ barrel prior to storage. Simply screw the cleaner on to the gun and flush through by pulling the trigger.
- **Note: foam is particularly difficult to remove once hardened.**
- Application temperature +5°C to +35°C.

### INSTALLATION



### TECHNICAL DATA

Item	Art.-No.	Contents	Sales unit
		[ml]	[pcs]
PU Foam Cleaner	42750	500	1

## Standard gun



### ADVANTAGES

- The Standard foam gun has a Teflon coated adapter to help prevent adhesion of leftover foam. Foam tins can be changed quickly and easily.
- The variable flow of foam is controlled by the rear adjustment dial which increases accuracy whilst dispensing the foam.
- Opened cans, which remain screwed onto the gun can be reused, without curing, during short term interruptions.

## Professional gun



### ADVANTAGES

- The Professional foam gun meets the tough requirements of a typical construction site.
- The handle is designed to provide an ideal centre of gravity which promotes precise handling.
- The foam only flows through metal channels therefore increasing the lifespan of the gun and offering maximum efficiency.
- The variable flow of foam is controlled by the rear adjustment dial which increases accuracy whilst dispensing the foam.
- Opened cans can remain screwed onto the gun during interruptions of work without curing.

## Long reach Air Seal gun



### ADVANTAGES

- Ideally used for work with Air Seal Gun foam
- The Long Reach Foam Dispenser Gun (1m) allows many installations to be carried out from floor level, reducing risks associated with working from heights.
- The variable flow of foam is controlled by the rear adjustment dial which increases accuracy whilst dispensing the foam.
- Opened cans, which remain screwed onto the gun can be reused, without curing, during short term interruptions.

## KP M2 Sealant gun



### ADVANTAGES

- Robust design meets the tough requirements of a typical construction site.
- The 17:1 transmission ratio makes extrusion fast and easy.

## Hand foam nozzles



### ADVANTAGES

- Additional nozzles for use with hand held foams helps to maximise the usage of foam.

### TECHNICAL DATA

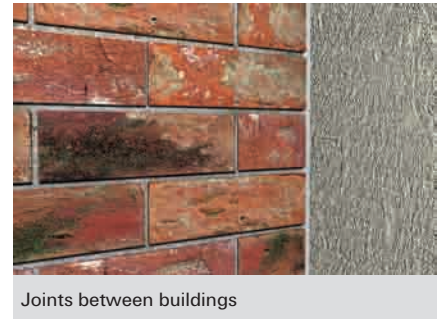
Item	Art.-No.	Sales unit
		[pcs]
Standard Foam Gun	62400	1
Professional Foam Gun	33208	1
Long Reach Foam Gun - (1m)	513849	1
KP M2 Gun - Sealants	53117	1
Hand Foam Nozzles x 10	42751	6



## The intumescent acoustic mastic sealant with fire rated properties



Sealing connection joints



Joints between buildings

### BUILDING MATERIALS

- Glass
- Steel , stainless steel
- Rigid PVC
- Anodised , mill-finished aluminum
- Concrete

### CERTIFICATES

- Fire test in accordance with BS476 part 20/22, BS EN1366-3 and BS EN 1344-4 2006.
- Acoustic rating in accordance with BS EN ISO-140-3: 1995 and BS EN ISO-717-1: 1997.
- Certifire third party approved CF 5034
- Sealing rating ISO 11600 F-12.5P

### ADVANTAGES

- Up to 300 minutes/ 5hr Fire Integrity & Insulation Rating.
- Rapid Joint movement capability of up to +/-10%.
- Acoustic Barrier - Up to 38 dB. (Sound Reduction Index)
- Halogen free.
- Resists fungi and vermin.
- Can be painted.
- Resistant to rotting and faeces.
- 15 month storage life.
- Available in 600ml foil packs to for productivity savings, to promote sustainability and reduce waste.
- Can be used with fischer FireStop foam and B2 foam to extend application range.

### APPLICATIONS

- Designed for low movement construction joints up to 50mm.
- Suitable compatibility in timber, steel, concrete, drywall and brick/block work.
- Suitable for internal use only.
- Use on fire rated foam to form a fire barrier system.

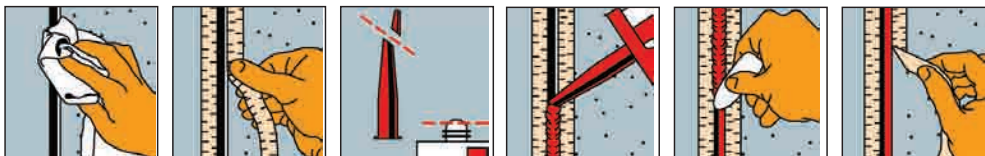


Approved  
CF 5034

### FUNCTIONING

- fischer FiAM 310 is a one part water based intumescent acoustic acrylic mastic that can provide up to 5 hours fire resistance when used in construction joints and services.
- Under fire conditions, the sealant will intumesce and form a char that provides an effective barrier to heat & fire.
- FiAM also provides an effective smoke & air tight seal, as well as helping to maintain the Acoustic integrity of a structure.

### INSTALLATION



### TECHNICAL DATA

Item	Art.-No.	contents per canister / pack* [ml]	Sales unit [pcs]
<b>FiAM 310</b>	<b>53011</b>	310	25
<b>FiAM 600</b>	<b>56006</b>	600*	12
<b>KP M2 Applicator gun</b>	<b>53117</b>	-	1
<b>PF 600 Gun 600ml</b>	<b>97967</b>	-	1

## TECHNICAL DATA

Fire protection of movement joints within walls and floors

Joint size [mm]	Depth of sealant [mm]	Integrity [mins]	Insulation [mins]	Backing	Type of seal
10	10	240	30	Backing rod	single
15	10	240	30	Backing rod	single
20	15	240	120	Backing rod	dual
20	20	240	60	Cavity FireStop strip	single
30	15	240	120	Backing rod	dual
30	15	240	60	Cavity FireStop strip	single

## TECHNICAL DATA

### Backing materials

**Note:** Ensure that the joint is filled using an appropriate backing material for the fire rating you are trying to achieve.

Backing Materials	
PE Foam	Closed cell polyethylene backer rod (normal density 35kg/m <sup>3</sup> )
MMF	Mineral fibre 90kg/m <sup>3</sup> density
PU Foam	B2 or FireStop foam for longer rating

For further information on backing materials contact the Technical Services Department on 01491 827920 / technical@fischer.co.uk

## TECHNICAL DATA

Application guide - joints

Application	Max. size [mm]	FiAM	foam as backing material
Concrete/masonry to steel linear joint	50	yes	FireStop foam / Foam B2
Softwood/hardwood to masonry/concrete linear joints	30	X*	FireStop foam / Foam B2
Softwood to masonry/concrete linear joints	25	yes	FireStop foam / Foam B2
Hardwood to masonry/concrete joints	50	yes	FireStop foam / Foam B2
Drywall to masonry/concrete	35	yes	FireStop foam / Foam B2
Masonry/concrete to masonry/concrete joints	50	yes	FireStop foam / Foam B2

\*FFRS can be used instead - see page 12

## TECHNICAL DATA

Acoustic data

	Unsealed Wall	Wall sealed with FiAM
Average SRI (100-3150Hz)	15.6dB	36.6dB
Weighted SRI, Rw Index	14dB	39dB
STC Rating	14dB	39dB

## TECHNICAL DATA

### Consumption guide

joint size [mm]	depth of sealant [mm]	Yield per 310ml cartridge in linear meters	Yield per 600ml pack in linear meters
10	10	3.10	6.00
15	10	2.07	4.00
20	10	1.55	3.00
25	12	1.03	2.00
30	15	0.69	1.33

Figures above are approximate and for guidance only. No account has been taken for normal wastage, which on a 310ml cartridge is estimated at 10%. For foil pack the wastage is estimated at 2-3%. For further details please contact the fischer Technical Department on 01491 827920 / technical@fischer.co.uk

## TECHNICAL DATA

### Specifications

Packaging:	310ml cartridge / 600ml foil pack
Colour:	white
Slump:	nil up to 20mm
Cure time:	1.5mm per 24 hours
Skinning time:	10 mins at 23 ° / 50% RH
Shore/A:	50
Application temp:	+5 ° C to +40 ° C

\* dependant on sales volume

## The high movement sealant with fire rated properties



External connection joints



Joints between buildings

### BUILDING MATERIALS

- Glass
- Steel , stainless steel
- Rigid PVC
- Anodised , mill-finished aluminum
- Concrete

### CERTIFICATES

- Fire test in accordance with BS476 part 20/22 and BS EN1366-4 2006.
- Acoustic test in accordance with- BS EN ISO-140-3: 1995 and BS EN ISO-150 717-1: 1997.
- Certifire third party approved - CF 5093.
- Sealing rating ISO 11600.

### ADVANTAGES

- Up to 240 minutes/4hr Fire Integrity.
- Joint movement capability of up to +25%.
- Halogen free.
- Resists fungi and vermin.
- Can be painted.
- Resistant to rotting and faeces.
- 12 month storage life.
- Use with fischer FireStop and B2 foam to form a fire barrier system, if required.

### APPLICATIONS

- Designed for medium to high movement construction joints of up to 500mm.
- Compatible with timber, steel, concrete, drywall and brick/block work.
- Movement Capability +/- 25 %.
- Suitable for internal and external use.
- Material safety sheet available on request

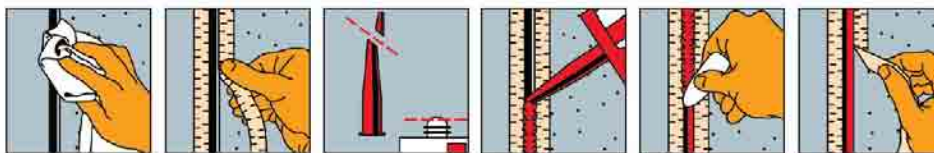


Approved  
CF 5093

### FUNCTIONING

- fischer FFRS is a one part silicone sealant that can provide up to 4 hours fire resistance when used in both horizontal and vertical construction and movement joints.
- Halogen-free the FFRS exhibits excellent slump characteristics and has been designed to cross link at room temperature to give a flexible seal.

### INSTALLATION



### TECHNICAL DATA

Item to order only		contents per canister [ml]	Colour	Sales unit [pcs]
Item	Art.-No.			
FFRS 310	512374	310	Grey	12
FFRS 310	518778	310	White	12
KP M2 Applicator Gun	53117	-		1

Minimum order qty applies. Please call the fischer Technical Dept. on 01491 827 920 for details.



## TECHNICAL DATA

### Fire rating

Joint size [mm]	Depth of sealant [mm]	Integrity	Insulation	Backing	Type of seal
15	10	264	233	Mineral Fiber	Dual
15	10	262	264	Polyethylene	Single
25	15	264	138	Backing Rod	Single
40	25	264	264	Mineral Fiber	Dual

## TECHNICAL DATA

### Coverage

A single 310 ml cartridge will provide the following coverage rates, see below.

Joint Size [mm]	Depth of Sealant [mm]	Yield Per Cartridge
30	20	1.0 l/m
20	15	2.0 l/m
15	8	2.5 l/m
10	10	6.0 l/m
6	6	8.5 l/m

## TECHNICAL DATA

### Application guide - joints

Application	Max. size [mm]	FFRS	foam as backing material
Concrete/masonry to steel linear joint	50	yes	FireStop foam / Foam B2
Softwood/hardwood to masonry/concrete linear joints	30	yes	FireStop foam / Foam B2
Softwood to masonry/concrete linear joints	25	X*	FireStop foam / Foam B2
Hardwood to masonry/concrete joints	50	X*	FireStop foam / Foam B2
Drywall to masonry/concrete joints	35	X*	FireStop foam / Foam B2
Masonry/concrete to masonry/concrete joints	50	yes	FireStop foam / Foam B2

\*FiAM can be used instead - see page 9

## TECHNICAL DATA

Cure System:	Alcoxy
Specific Gravity:	1.35-1.38
Skimming Time:	5/10 minutes approx. (at 23°C and 50% relative humidity)
Tack Free Time:	25 min approx. (at 23°C and 50% relative humidity)
Full Cure:	2-3mm approx. per 24hrs (at 23°C and 50% relative humidity)
Shore A Hardness:	22
Extrudability g/min:	55 (standard NMRPS 495A 3mm/3 bars)
Movement accommodation:	± 25%
<b>Mechanical Properties on a 2mm thick film (NF T 46002)</b>	
Modulus at 100% elongation:	0.37 Mpa
Elongation at break:	550%
Tensile strength:	1.5 Mpa
<b>Mechanical Properties on glass slabs (EN 28339)</b>	
Modulus at 100% elongation:	0.32 Mpa
Elongation at break:	260%
Tensile strength:	0.55 Mpa
<b>Application Temp Range: +5°C to +40°C</b>	<b>Service Temp Range: -50°C to +150°C</b>
Range: -50°C to +150°C	Must not be stored above 35°C
Shelf Life:	Up to 12 months when stored in unopened cartridges under cool, dry conditions.
Life Expectancy:	When used and applied correctly the sealant will perform in excess of 20 years.
Chemical Resistance:	The cured sealant is unaffected by water, dilute acids and alkalis, soap and household detergents. Certain solvents may soften and swell the cured rubber on prolonged contact.

## The flexible general purpose silicone for internal and external applications



Joints in sanitary areas



Sealing joints around the kitchen

### BUILDING MATERIALS

- Stainless steel
- Epoxy
- Tiles
- Glazed surfaces
- Glass
- H-PVC
- Ceramics
- Painted wood
- Polyester

### ADVANTAGES

- With 25% elasticity the DMS is ideal for expansion joints which guarantees long lasting performance.
- The fungicidal properties ensures the silicone looks 'clean' over a long period of time.
- With a good grip on smooth surfaces damp is prevented from penetrating and spreading.
- Good resistance to UV weathering and ageing means that DMS can be used indoors and outdoors, offering long term security.

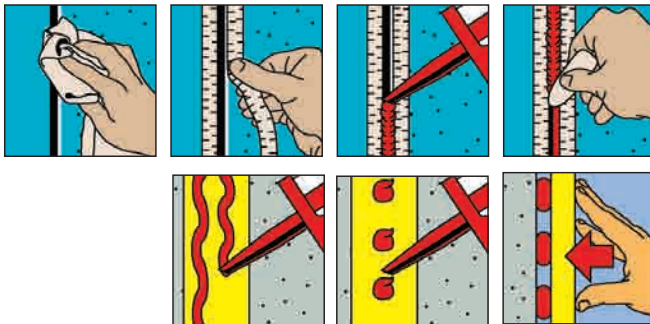
### APPLICATIONS

- Bathrooms, showers and toilets.
- Connection joints to sinks.
- Expansion joints between tiles.
- Connection joints in the kitchen.
- Joints between timber and tiles.
- Glazing wood and aluminium windows.
- Seal welds for display cabinets and glass blocks.

### FUNCTIONING

- Chemical base: 1-component silicone acetate.
- Permanently elastic.
- With fungicide.
- Skin formation time: approx. 5 minutes
- Processing temperature: +5°C to +40°C.
- Temperature resistance: -50°C to +120°C.
- Permitted overall deformation: 25%
- Very good resistance to weather, ageing and UV.
- Cannot be painted.

### INSTALLATION



### TECHNICAL DATA

Item	Art.-No.	Colour	Contents	Sales unit
			[ml]	[pcs]
DMS TP (GB/E)	040385	transparent	280	24
DMS W (GB/E)	040386	white	280	24
DMS GR (GB/E)	040389	grey	280	24

## Technical disclaimer / Decisive factors

Due to the complexity of building materials, tools, fixing elements and installation techniques a comprehensive recommendation depends on full and detailed understanding of specific site conditions.

This document is a factual record of anchor performance obtained under specific conditions and does not constitute an endorsement of the suitability of the product for any specific application. This responsibility remains with the customer.

The data given shall be used as a guide for assessment or anchor suitability. Even when our advice is given in good faith it cannot be binding for this reason and we cannot accept any liability for any anchor failure due to the wrong design, misuse or wrong installation.

For safety critical applications only anchors with an ETA or Zulassung German Approval shall be used.

For further product information please contact the fischer Technical Department:

Phone: 01491 827 920

E-mail: [technical@fischer.co.uk](mailto:technical@fischer.co.uk)

### **fischer fixings (UK) Ltd.**

Whitely Road, Wallingford, Oxon, OX10 9AT.

We cannot be responsible for any errors, and we reserve the right to make technical and range modifications without notice.

No liability is accepted for printing errors and omissions.

### **General Notice**

The information in this brochure is intended for general guidance only and is given without engagement. Additional information and advice on specific applications is available from our Technical Support Team. For this however, we require a precise description of your particular application.

All the data in this brochure concerning work with our fixings must be adapted to suit local conditions and the type of materials in use.

If no detailed performance specifications are given for certain articles and types, please contact our Technical Service Department for advice.

Phone: 01491 827 920

E-mail: [technical@fischer.co.uk](mailto:technical@fischer.co.uk)

01/2013

Contacts

fischer fixings UK Ltd.  
Whitely Road  
Oxon OX10 9AT Wallingford  
Great Britain  
Phone (0044) 1491 827900  
Fax (0044) 1491 827953  
E-mail [info@fischer.co.uk](mailto:info@fischer.co.uk)  
[www.fischer.co.uk](http://www.fischer.co.uk)

Your dealer:

Technical Service

If you need any assistance, simply contact your local fischer representative. For more specialised application problems please contact our Technical Services Team.

fischer fixings UK Ltd. Wallingford, Oxon, OX10 9AT.

Phone 01491 827 920  
e-mail: [technical@fischer.co.uk](mailto:technical@fischer.co.uk)

Technical Training

We also offer training seminars suited to your individual needs and requirements. Please call the number above to find out more



[www.fischer.co.uk](http://www.fischer.co.uk)



**fischer**  <sup>®</sup>  
*innovative solutions*